

ROYAL ENFIELD HIMALAYAN

**BUILT FOR ALL ROADS.
BUILT FOR NO ROADS.**



Decades of expeditions. Thousands of kilometers of traversing the most challenging terrain. Years of living and evolving with a machine that responds to any ride you set off on. That's how we made the Himalayan, our first purpose-built motorcycle. It has been tested on the roads, the rocks and everything in-between, to bring you a machine that's resilient, reliable and ruggedly handsome.



PURPOSE-BUILT FOR ADVENTURE

Built to be tough and adaptable to all kinds of roads or the lack thereof, the Himalayan keeps you in harmony with the road. The upswept silencer and 220 mm of ground clearance make it easy to ride through every challenge the road throws at it. A pair of hefty 17" and 21" wheels with dual-purpose tyres allows steady grip on all roads and no roads. And the dual-channel ABS, with the option of switching it off at the rear wheel, makes for a confident and engaging ride.



Front Tyres

90/90 - 21



Front Brakes

300 mm disc, 2-Piston floating caliper



Maximum Power

24.3 bhp (17.88kw) @ 6500 rpm

Rear Tyres

120/90 - 17

Rear Brakes

240 mm disc, single piston floating caliper

Maximum Torque

32 Nm @ 4000-4500 rpm



Dual channel (switchable to single channel ABS - Rear wheel ABS control deactivation)

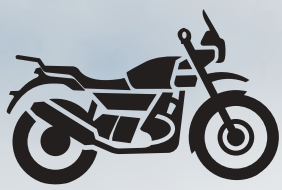
Ground Clearance

220 mm



TOUR-MINDED DESIGN

Go where your adventures take you. The all-new Tripper Navigation System with USB port on your Himalayan keeps you on course. Ride longer and farther with the enhanced comfort of the new cushioned seat. The 800 mm seat height, perfectly positioned footpegs and broad handlebars only add to it, whether you ride sitting or standing. The newly designed front rack and rear carrier safely hold your stuff as you ride on, unhindered.



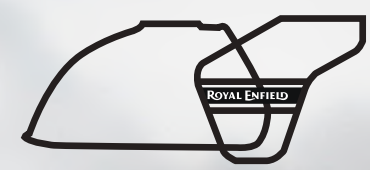
Wheelbase

1465 mm



Kerb Weight

199 Kg



Fuel Capacity

15+/- 0.5 l

Length

2190 mm

Fuel Supply

Electronic fuel injection



Bore x Stroke

78 mm x 86 mm

Width

840 mm

Seat Height

800 mm

Height

1370 mm
(Fly Screen Top)



VERSATILE PERFORMANCE

The Himalayan is meant to be the only motorcycle you will ever need. Born in the mountains, it is at home on any terrain. Backed by the powerful yet practical 411 cc long-stroke engine, it keeps you grounded whether you are off the beaten track or gently cruising on it. The half-duplex, split cradle frame and long-travel suspension make it go easy on everyday rides and rocky roads alike.



Engine

Single cylinder, 4 stroke, SOHC, Air-cooled



Front Suspension

Telescopic, 41 mm forks, 200 mm travel



Compression Ratio

9.5:1

Displacement

411cc

Rear Suspension

Monoshock with linkage, 180 mm wheel travel

Engine Oil

Semi Synthetic SAE 15W 50 API SL grade & above JASO MA 2

Ignition System

Digital electronic ignition

Air Cleaner

Paper element

Clutch

Wet, multi-plate

Gearbox

5-speed constant mesh

Engine Start

Electric

Chassis

Half-duplex split cradle frame

Lubrication

Wet sump



COLOURS HIMALAYAN



Gravel Grey



Dune Brown



Pine Green



Sleet Black



Glacier Blue



Granite Black

MiY
MAKE IT YOURS

GO ANYWHERE. BETTER EQUIPPED.

Handlebars in the front. Panniers at the back. And everything in between to let you strap up and set off anytime. Personalise your Himalayan on the MiY configurator or the Royal Enfield App.



**Genuine
Motorcycle
Accessories**

BE ADVENTURE READY

Accessorise your Royal Enfield Himalayan
with protection, utility and style.



Seamless integration
Engineered to fit
perfectly and easily to
your Royal Enfield.

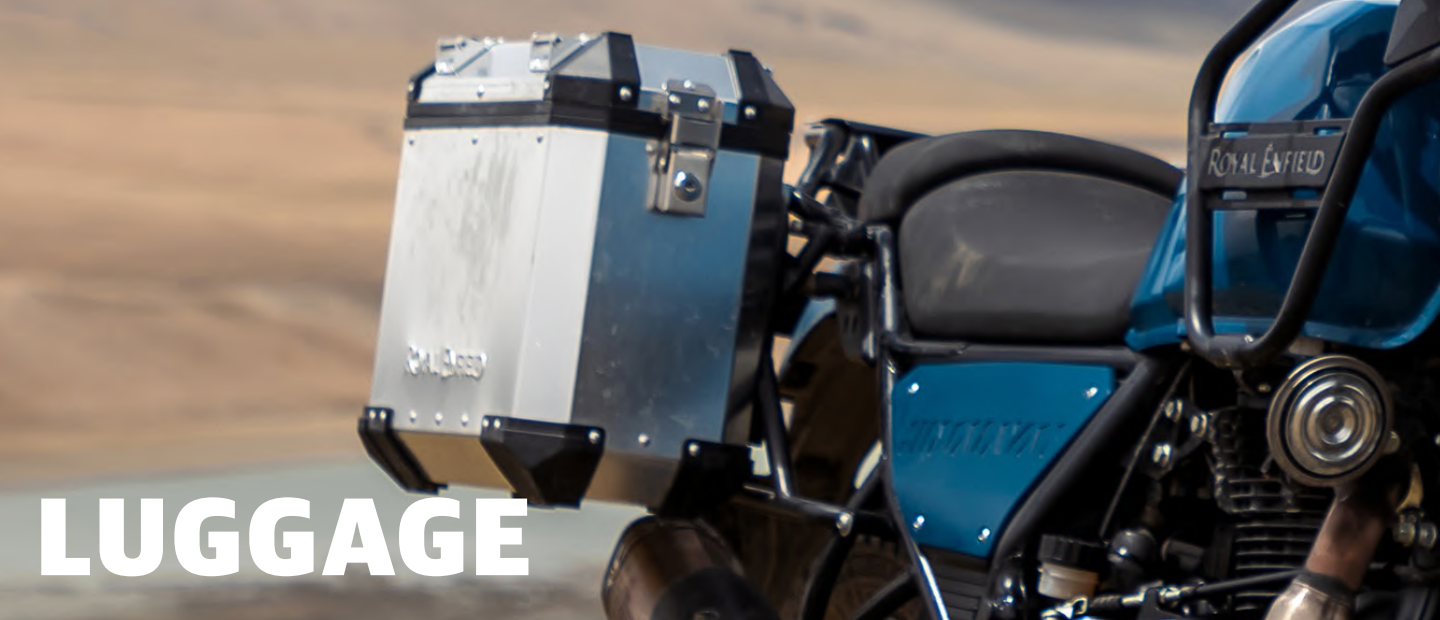


Assured Warranty
2-years worry-free
warranty for complete
peace of mind

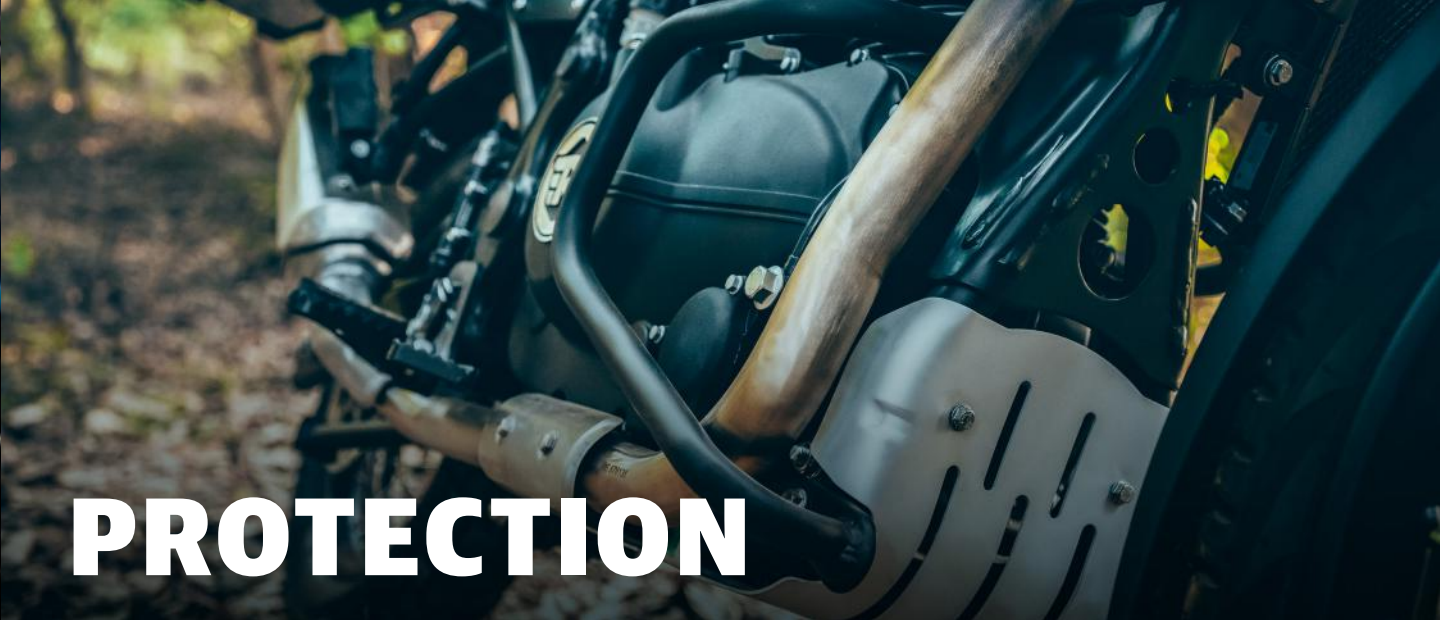


Fully Homologated
Approved and certified
by concerned authorities.
Meets all quality and
safety standards.





LUGGAGE



PROTECTION

BLACK ADVENTURE PANNIERS
1990230



SILVER ADVENTURE PANNIERS
1990200



BLACK LARGE ENGINE GUARDS
1990205



SILVER MASTER CYLINDER GUARD
1990219



BLACK ADVENTURE PANNIER RAILS
1990201



BLACK ADVENTURE WATERPROOF INNER BAGS
1990252



SILVER OIL COOLER GUARD
1990216



BLACK ADVENTURE HANDGUARDS
1990211



CONTROLS



SEATS

BLACK ADVENTURE HANDLEBAR
1990206



BLACK HANDLEBAR BRACE PAD
1990258



BLACK TOURING RIDER SEAT
1990208



BLACK TOURING PASSENGER SEAT
1990209



BODYWORK

BLACK BAR END FINISHERS
1990220



SILVER OIL FILLER CAP
1990236



BLACK OIL FILLER CAP
1990218



BLACK FRONT RESERVOIR CAP
1990652



SILVER FRONT RESERVOIR CAP
1990653



It's a bike that's comfortable going absolutely anywhere, at least anywhere I have the ability to ride.

- Cycleworld

An astonishing adventure

The Himalayan is a hugely capable bike with nothing that compares to it in the same price range. It will munch miles on tarmac while still daring to take you into the forest on an adventure.

- Money Control

India's own ADV

It is an absolute bomb of a product if you look at what price you are paying for it and the fun it promises on your adventures.

- HT Auto



GEAR UP TO RIDE ANYWHERE WITH ROYAL ENFIELD APPAREL



ROYAL ENFIELD RIDING GLOVES

Extremely comfortable and lightweight, the Royal Enfield Riding Gloves offer class-leading protection on every ride.



ROYAL ENFIELD HELMETS

Royal Enfield Helmets are designed with the latest advancements in technology, comfort and safety and are purpose-built for all weather and terrain, while keeping you safe and secure.



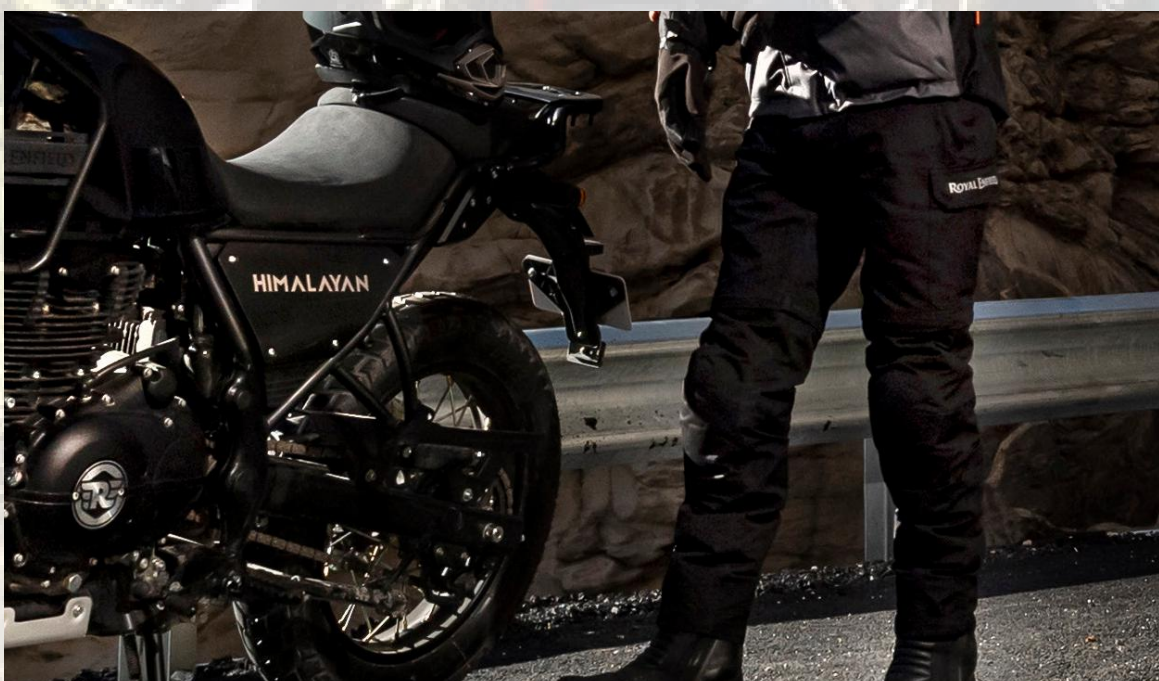
JACKETS

Stay protected against all the elements with Royal Enfield Jackets. From protection, comfort and neat design touches, chase the unknown with ease.



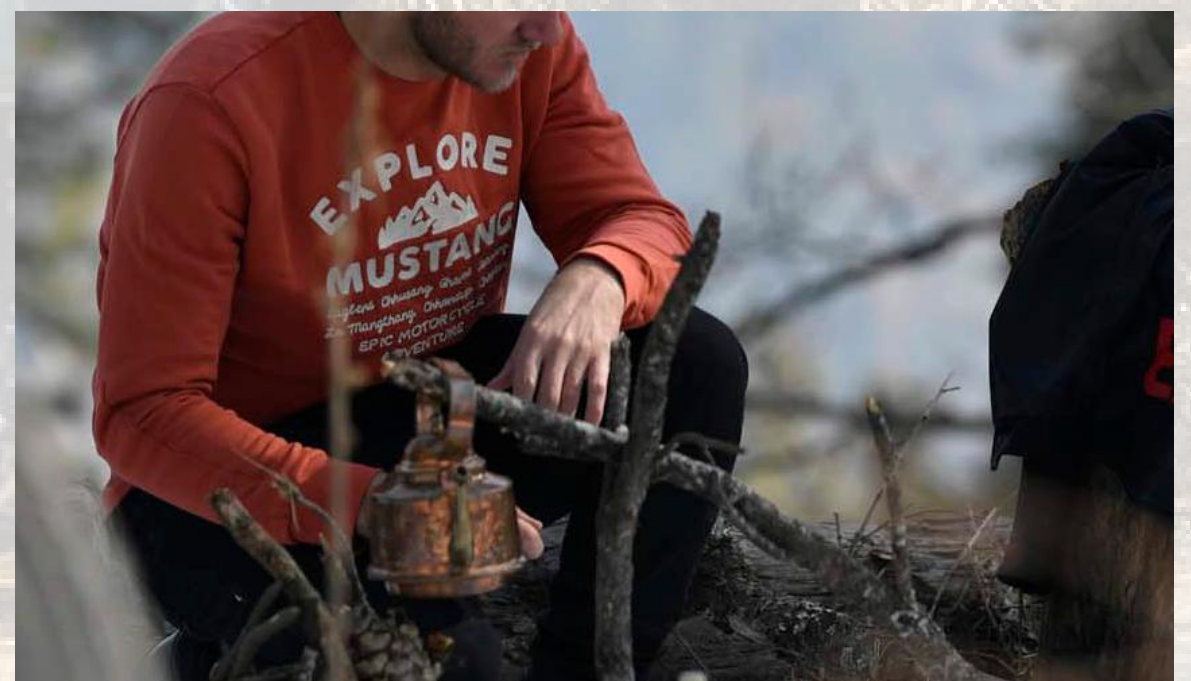
BOOTS

Stride through all your adventures with these sturdy and all terrain Royal Enfield Boots, designed to keep you snug, dry and cool on both short and long rides.



RIDING TROUSERS

Crafted for superior abrasion resistance, Royal Enfield Riding Trousers allow for maximum rider mobility on the motorcycle with unparalleled comfort.



T-SHIRTS

Find your perfect fit from the bright and exciting collection of Royal Enfield T-shirts for comfortable and unforgettable rides.

RIDE MORE. RIDE PURE.



From the Himalayas to the coastal trails, Royal Enfield offers a range of experiential rides that give you a first hand experience of exploring exquisite landscapes, stunning trails and discovering the feeling of riding pure.



ROYAL ENFIELD



For any queries, call us 18002100007 or email us at support@royalenfield.com



Royal Enfield



Royal Enfield
[theroyalenfieldhimalayan](https://www.instagram.com/theroyalenfieldhimalayan)



Royal Enfield